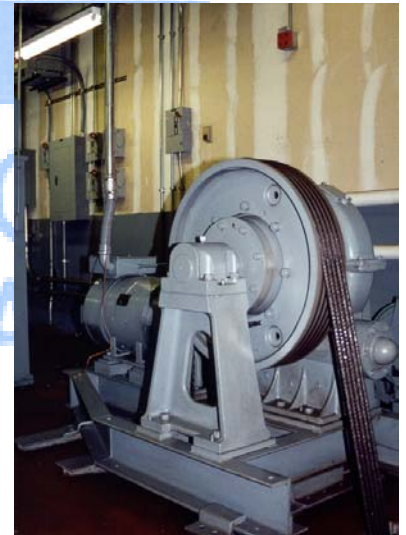


# TRACTION ELEVATORS

## The following to be provided by owner and / or general contractor:

- A legal hoistway of proper size, plumb within 1 " per 100', and pit of proper depth.
- A suitable machine room with legal access & clearances properly heated & ventilated. Recommend temperature to be maintained between 10 C and 50 F to 20 C and 80 F.
- Support for rail fastening at intervals where specified by elevator contractor, including separator beams between hoistways.
- Rough openings for elevator entrances in front walls, as indicated by elevator contractors drawings, at all floors, the front wall shall not be erected until the entrances have been set in place.
- Hoistway guards & barricades during the time of equipment installation.
- All necessary sleeves & the setting of same, as required by elevator contractor.
- Support for machine beams as indicated in plans.
- Reinforced concrete floor slab, with blockouts per plans, to be poured after machine is in place.
- Venting of hoistway as required by governing code.
- Sill supports, including grouting under sills, after sills are in place.
- All screens, railings, fences, steps & ladders, if required.
- All cutting of walls, floors or partitions together with all repairs, grouting, patching & painting made necessary by such cutting or changes.
- Temporary power (220V/50A minimum required) for operation of temporary hoist & tools.
- 3 pole fused main line switch in machine room for each elevator with feeders connected to each controller.
- 220V- 1 0-20 amp service to supervisory controller in machine room when required.
- Lights, light switch & convenience outlets in elevator machine room GFI protected.
- 120V-1 0-20 amp service for each elevator connected to controller(s) in elevator machine room for car lights & accessories. Must be lockable disconnect.
- Provide a light, light switch, & convenience outlet in the elevator pit where required GFI protected.
- All other equipment necessary & not otherwise called for in elevator contract.
- Phone for elevator car and wiring from building source to elevator control panel.
- Smoke detector at each floor and in the machine room as required by code.
- Ladder in pit extending 42" above lowest finished floor on strike jamb side.

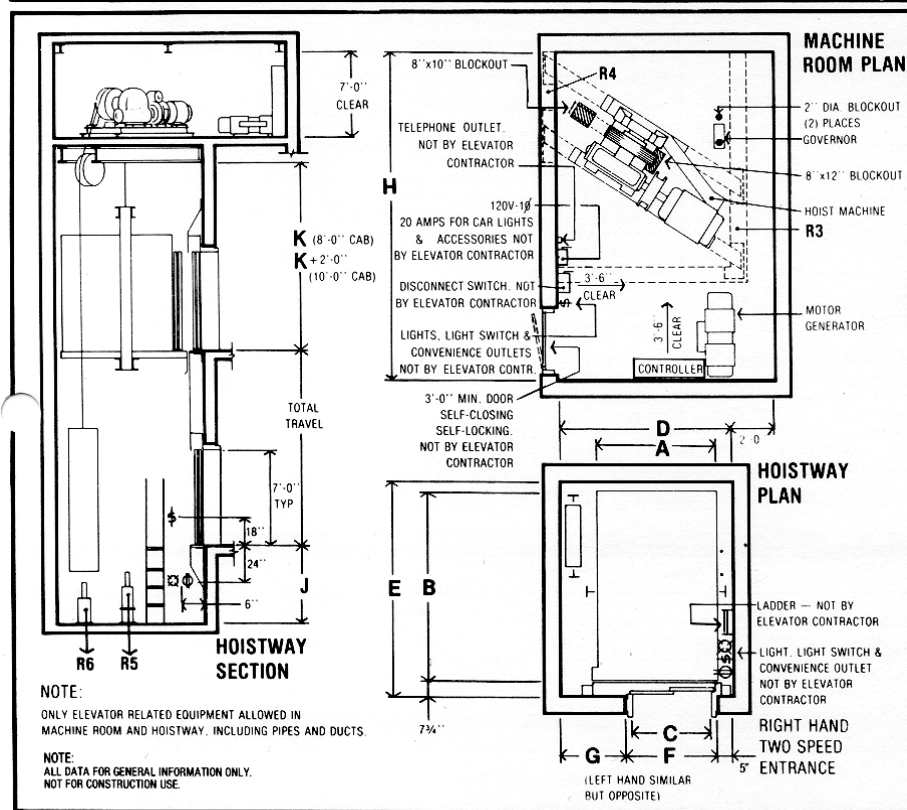
See our website at <http://www.abellelevator.com> for a complete written design specification



# GENERAL NOTES

# TRACTION ELEVATORS

Dimension	A	B	C	D	E	F	G	H	J			K			
Speed	200 – 350 FPM All Capacities / 400 FPM 3500 & 4000 lbs. only									200	350	400	200	350	400
3500	6'0"	8'4"	4'0"	7'6"	9'4"	4'10"	2'3"	14'0"	4'6"	5'0"	6'3"	13'6"	14'0"	16'0"	
4000	6'0"	8'8"	4'0"	7'10"	9'8"	5'0"	2'5"	14'4"	4'6"	5'0"	6'3"	13'6"	14'0"	16'0"	
4500	6'0"	9'6"	4'0"	7'10"	10'6"	5'0"	2'5"	15'0"	4'6"	5'0"	XX	13'6"	14'0"	XXX	



CAPACITY	3500	4000	4500
R1 (SAFETY APPL. -DOUBLE FOR IMPACT)	8.8K	9.4K	10.1K
R2 (RUNNING)	.4K	.5K	.7K
R3	15.0K	15.5K	16.0K
R4	24K	25.4K	26.7K
R5 (CAR BUFFER)	37.3K	39.8K	42.8K
R6 (CWT. BUFFER)	28.4K	29.7K	31.4K

**RAIL REACTIONS**

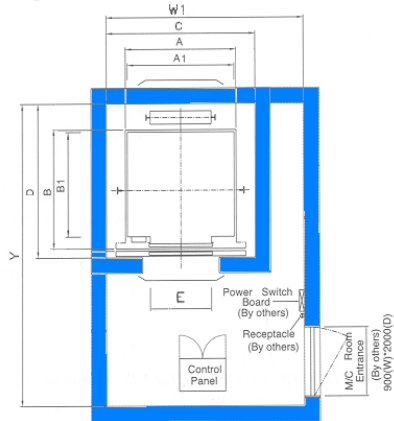
**SILL ANGLE DETAIL**

Dimension for rear opening add 11" single slide doors, 14" two speed doors. These dimensions are provided for informational purposes. Abell Elevator International is a custom manufacturer and is capable of providing building owners with custom applications to meet specific requirements.

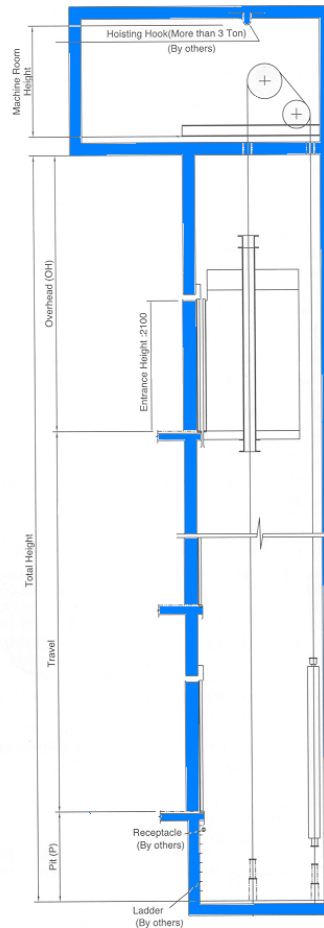
## HOSPITAL TRACTION SIMPLEX

# TRACTION ELEVATORS

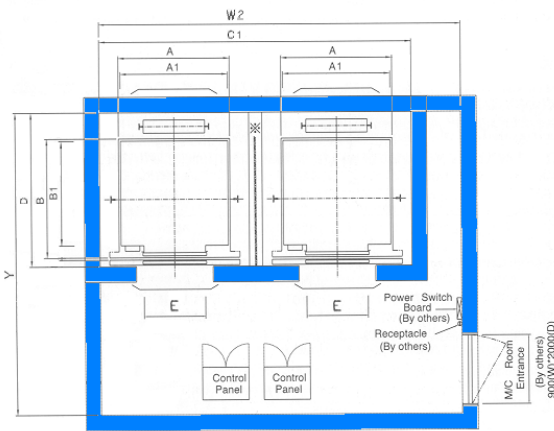
■ Hoistway & Machine Room Plan(Simplex)



■ Hoistway Section



■ Hoistway & Machine Room Plan(Duplex)



"OH" BOTTOM OF BEAM ft-in.		RATED LOAD (lb)				
SPEED (fpm)	2000	2500	3000	3500	4000	
100	14-6	14-6	14-6	14-6	14-6	
150	14-6	14-6	14-6	14-6	14-6	
● 200	14-6	14-6	14-6	14-6	14-6	
250	15-0	15-0	15-0	15-0	15-0	
300	15-0	15-0	15-0	15-0	15-0	
● 350	15-0	15-0	15-0	15-0	15-0	

RATED LOAD (lb)	AREA ■	CAR & HOISTWAY ft-in.								
		A	A1	B	B1	C	C1	D	E	
2000	24.2	6-0	5-8	5-1	4-3	7-4	15-0	6-10	3-0	
2500	29.1	7-0	6-8	5-1	4-3	8-4	16-0	6-10	3-6	
3000	33.7	7-0	6-8	5-5	4-7	8-4	16-0	7-4	3-6	
3500	38.0	7-0	6-8	6-2	5-3	8-4	16-0	8-0	3-6	
4000	42.2	8-0	7-8	6-2	5-3	9-6	19-4	8-0	4-0	

"P" PIT DEPTH ft-in.		RATED LOAD (lb)				
SPEED (fpm)	2000	2500	3000	3500	4000	
100	5-6	5-6	5-6	5-6	5-6	
150	5-6	5-6	5-6	5-6	5-6	
● 200	5-0	5-0	5-0	5-0	5-0	
250	5-0	5-0	5-0	5-0	5-0	
300	5-0	5-0	5-0	5-0	5-0	
● 350	5-0	5-0	5-0	5-0	5-0	

RATED LOAD (lb)	W1 WIDTH	W2 WIDTH	"Y" DEPTH FOR RATED SPEED (fpm)				
			100	150	200 ●	250	300
2000	7-4	15-0	16-0	16-0	16-0	16-0	16-0
2500	8-4	17-0	16-0	16-0	16-0	16-0	16-0
3000	8-4	17-0	16-0	16-0	16-0	16-0	16-0
3500	8-4	17-0	16-0	16-0	16-0	16-0	16-0
4000	9-6	19-5	16-0	16-0	16-0	16-0	16-0

## PASSENGER TRACTION SIMPLEX/DUPLEX